

# One Big Happy Family:

Connect to a Windows Network with LinNeighborhood

R. Scott Granneman

Senior Consultant, Internet Services

Bryan Consulting

© 2003 Scott Granneman

Last updated 20030212

You are free to use this work, with certain restrictions. For full licensing information, please see the last slide/page.

# What Is LinNeighborhood?

- From the Web site: "It's a GUI frontend running over Samba and Smbmount using the Gimp Toolkit. It requires the GTK+ libraries installed on your system."
- What I say: "It's like Windows' Network Neighborhood. It allows you to browse & mount Windows & Samba shares on a LAN. In typical open source fashion, it's far better than the Windows equivalent."
- Written by Hans Schmid & Richard Stemmer
- Licensed with the GPL

# Download LN

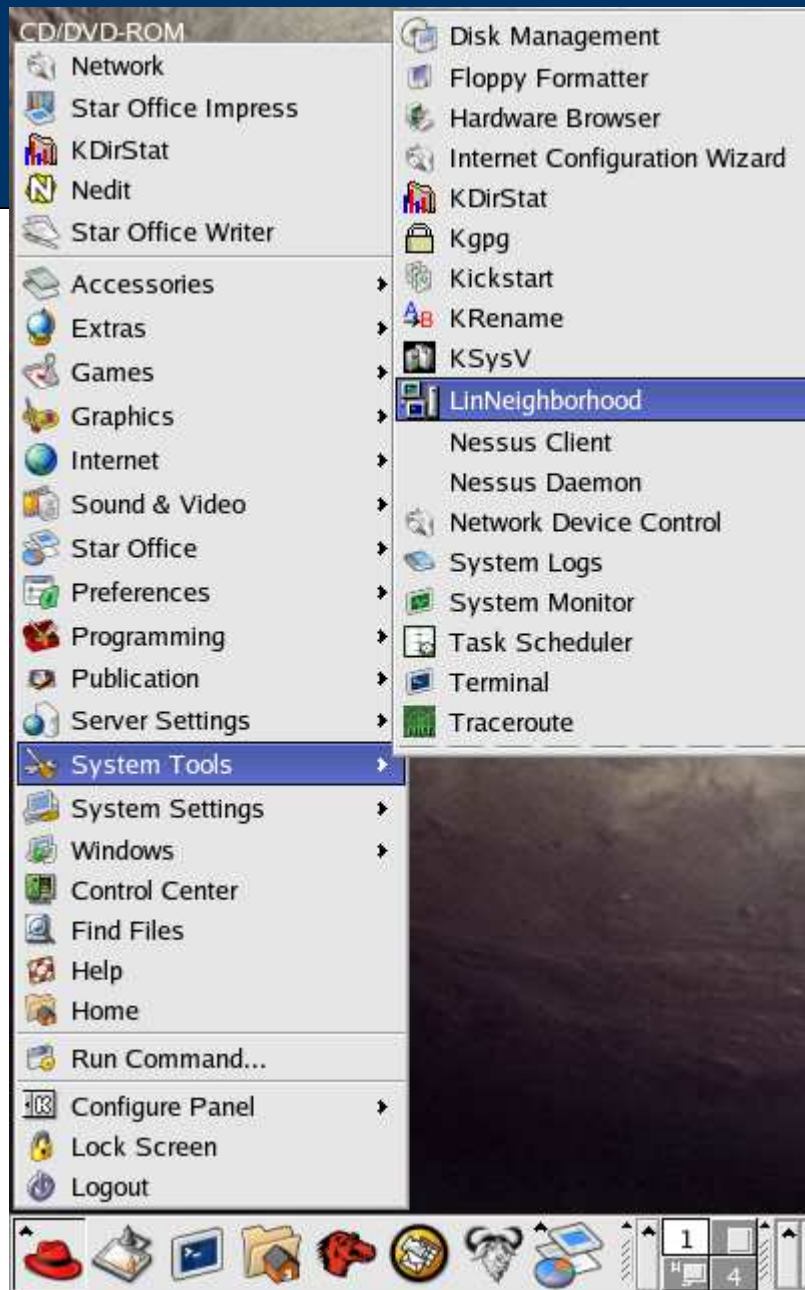
- Home page: [www.bnro.de/~schmidjo/](http://www.bnro.de/~schmidjo/)
- Downloads:  
[www.bnro.de/~schmidjo/download/index.html](http://www.bnro.de/~schmidjo/download/index.html)
  - SuSE & Debian binaries
  - Links to other binaries
  - Source
- RPM downloads: [java.thn.htu.se/~toor/](http://java.thn.htu.se/~toor/)

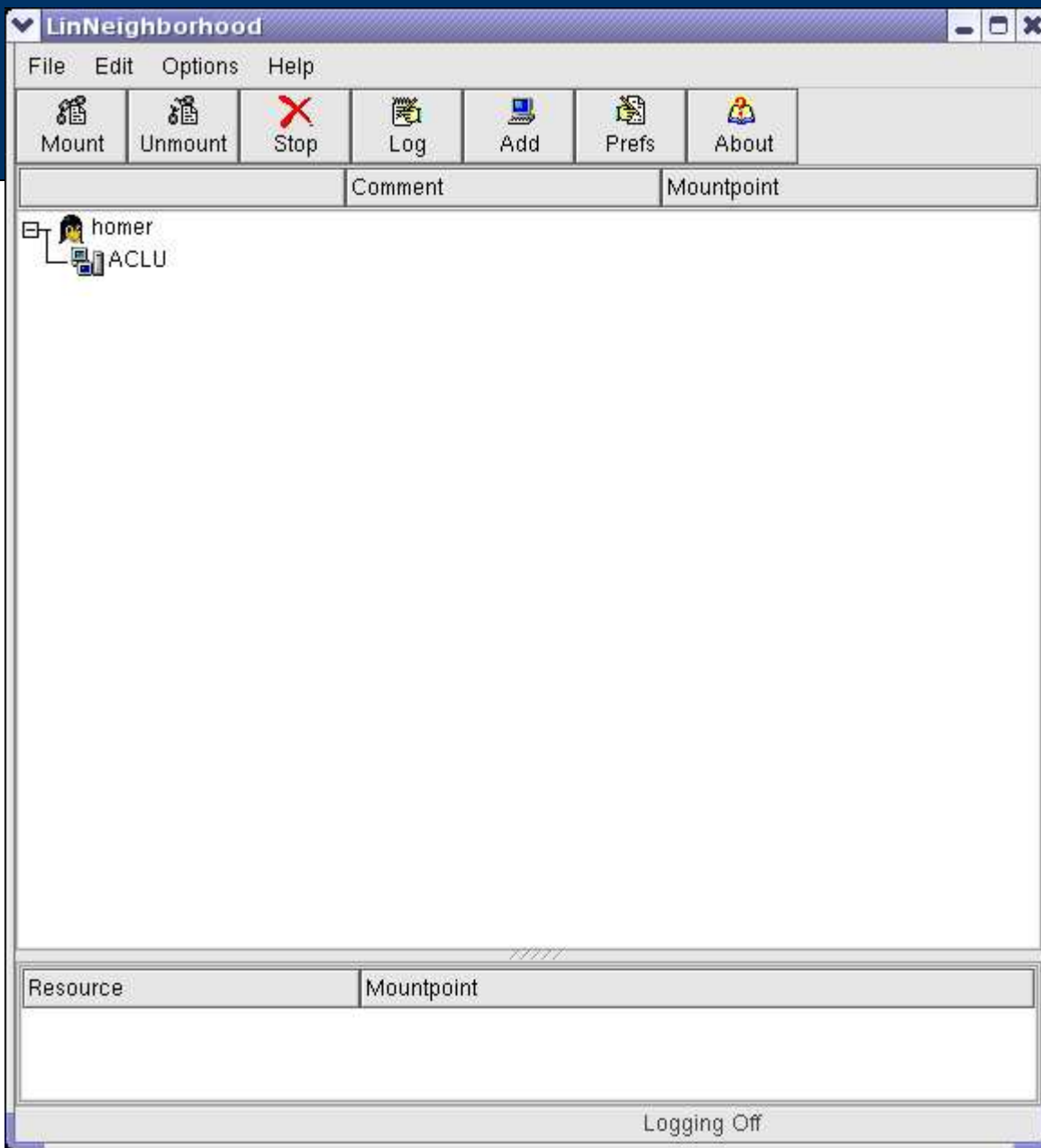
# Install & Configure LN on RH 8

- Do all commands on this page as root
- `rpm -Uhv LinNeighborhood-0.6.5-1.i686.rpm`
- In order to make LN work, I had to read the LN FAQ, at [www.bnro.de/~schmidjo/faq/index.html](http://www.bnro.de/~schmidjo/faq/index.html)
- Need to set setuid root on two key commands
  - `chmod +s /usr/bin/smbmnt`
  - `chmod +s /usr/bin/smbumount`

# Open LN

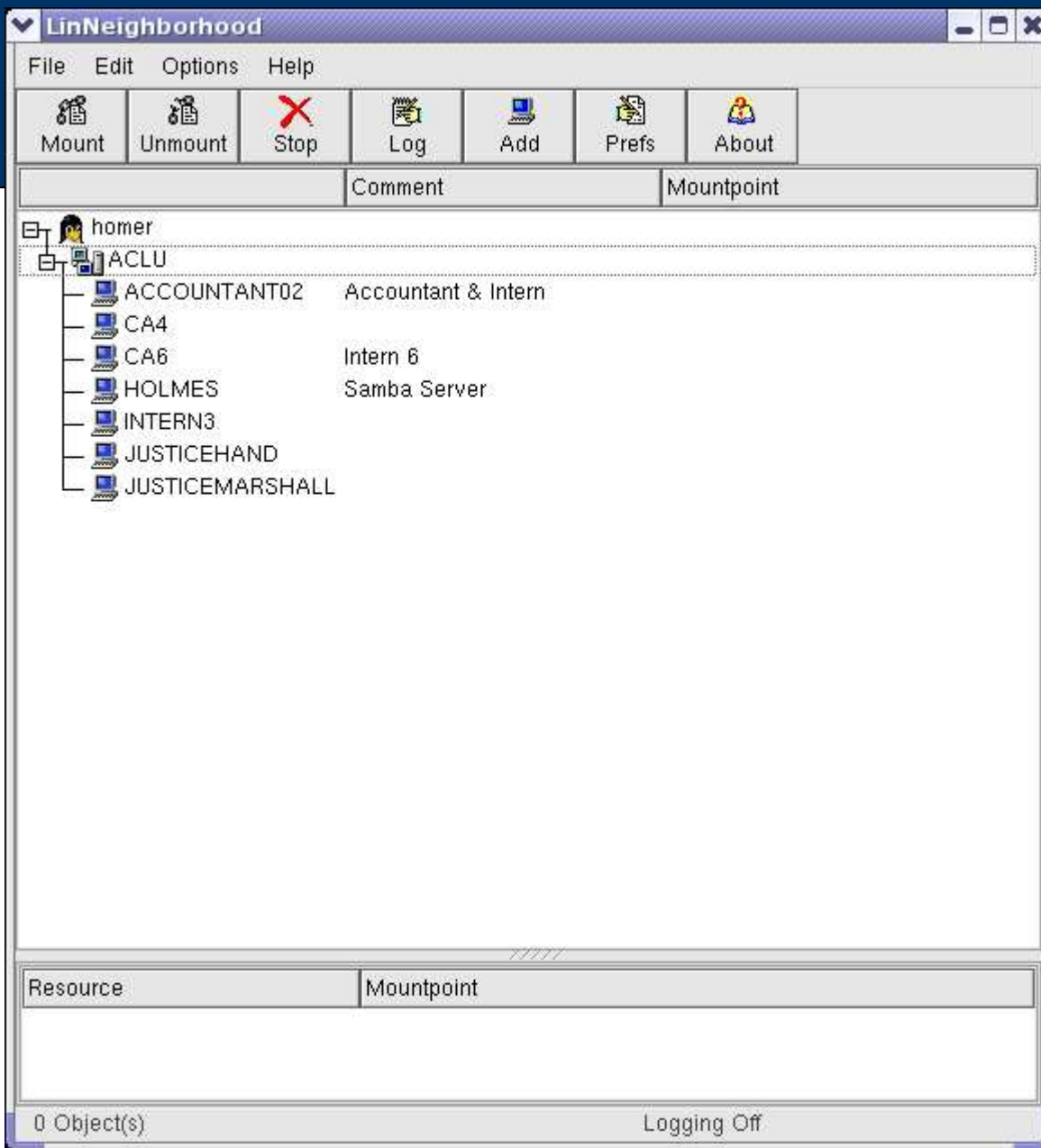
- Run LN as user, not root
- `/usr/bin/LinNeighborhood` from the command line
- Or use Menu Editor to make a shortcut on your Red Hat Menu





When you open LN, you see your machine (homer) and any SMB-based networks your machine is on (ACLU).

Double-click on the SMB network to get going.



LN shows you a list of all machines sharing files on the LAN.

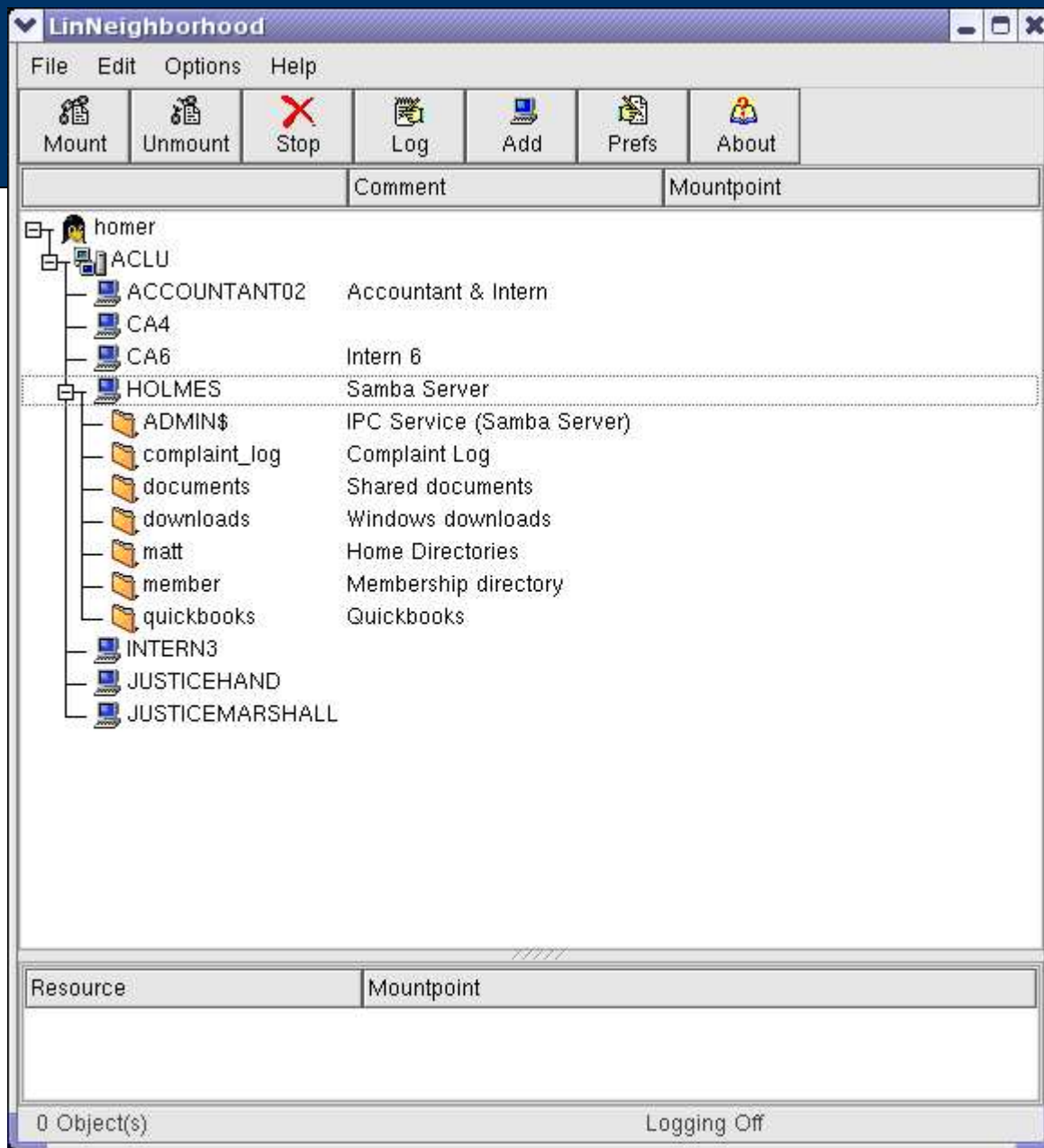
Double-click on the machine with the share you wish to access.





LN opens a dialog box asking you for the username & password you wish to use to connect to the machine.

In my experience, "domain" can be filled in with the workgroup if there is no domain.



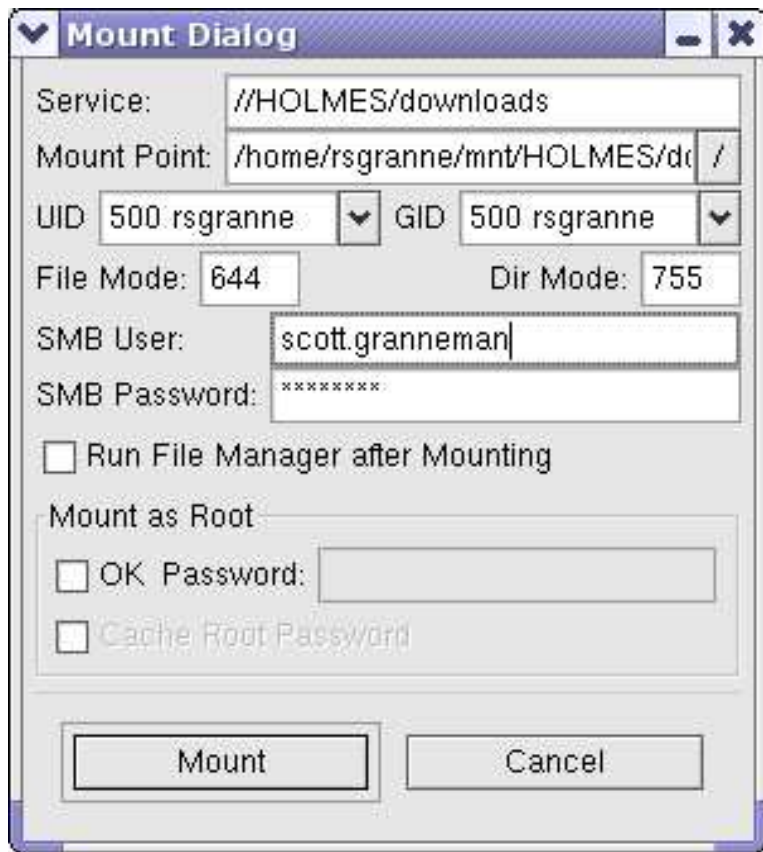
LN shows you a list of all shares on the machine.

Double-click on the share you wish to access.



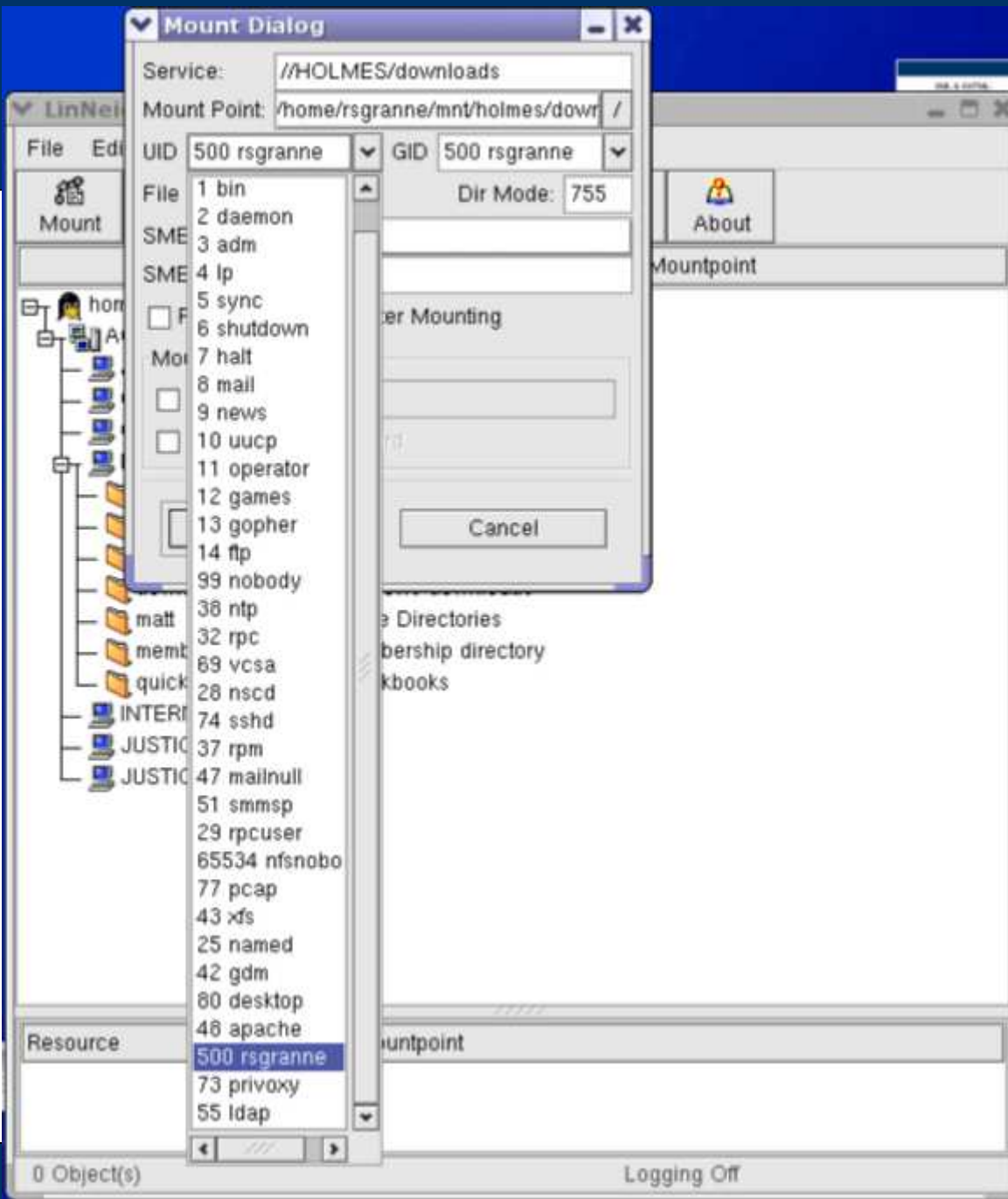
LN opens a dialog box asking you for the username & password you wish to use to connect to the share.

In my experience, "domain" is blank at this point if you are using a workgroup.

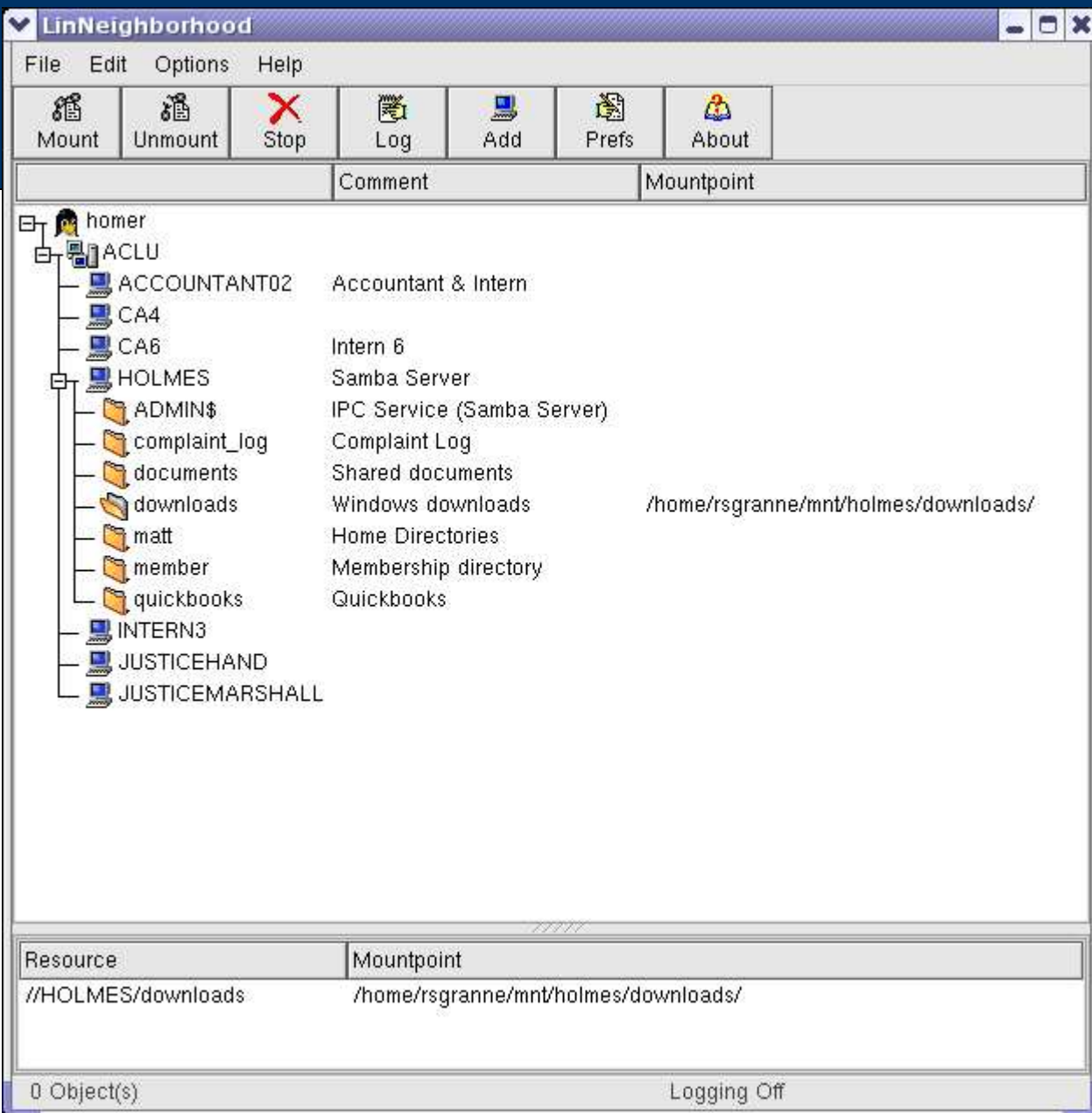


Now comes the most important part: you're about to mount the share onto your Linux box.

Note **Mount Point**. This is where you'll be able to access the share. LN automatically creates the mount point for you if it doesn't already exist. (I'm picky, so I change the ALLCAPS in **Mount Point** to lowercase)

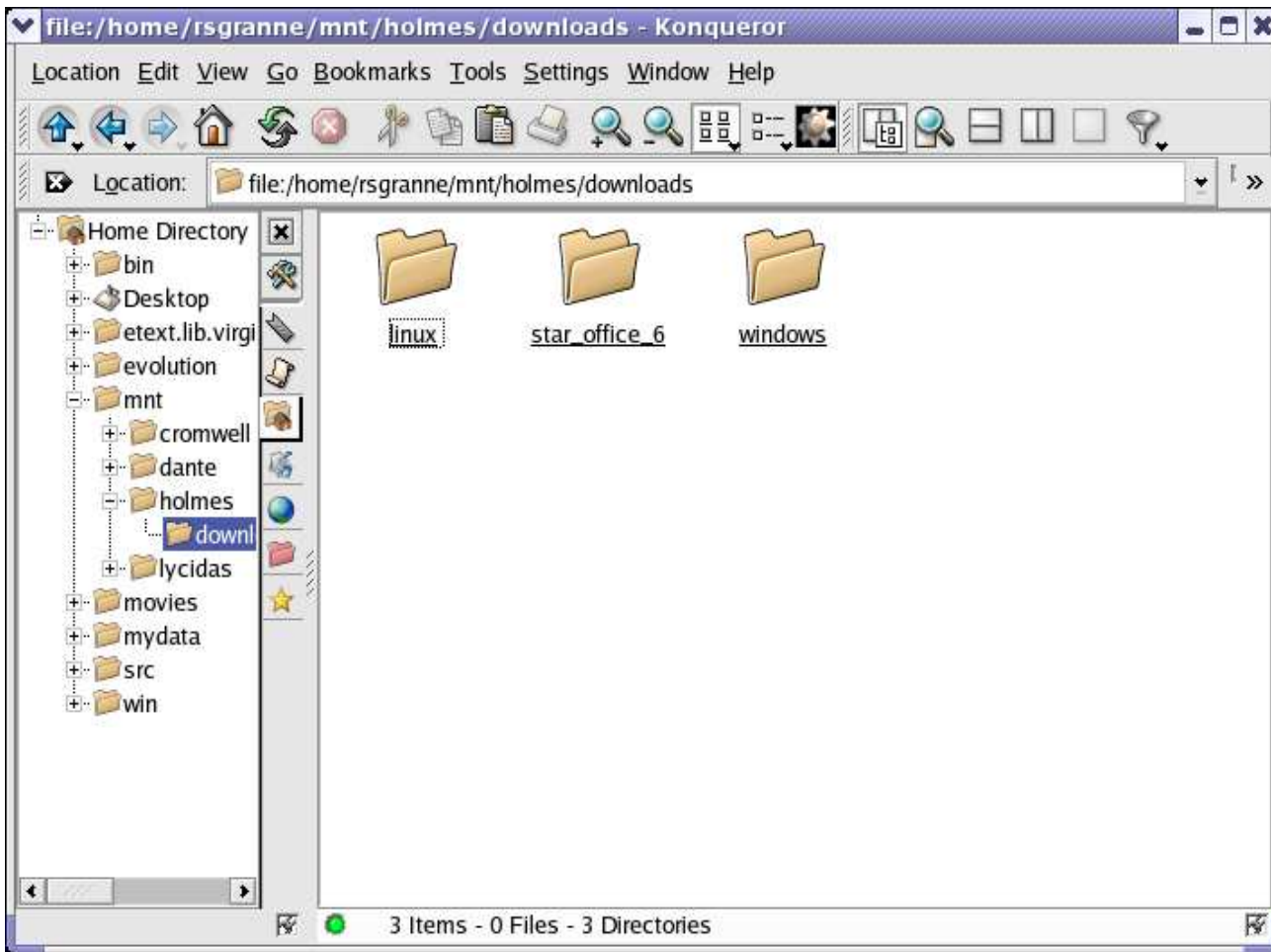


Note that you can also change the UID & GID at this stage as well.



After pressing the **Mount** button, you're presented with this window. **Success!**

If you wish to mount any other shares, repeat the previous steps.



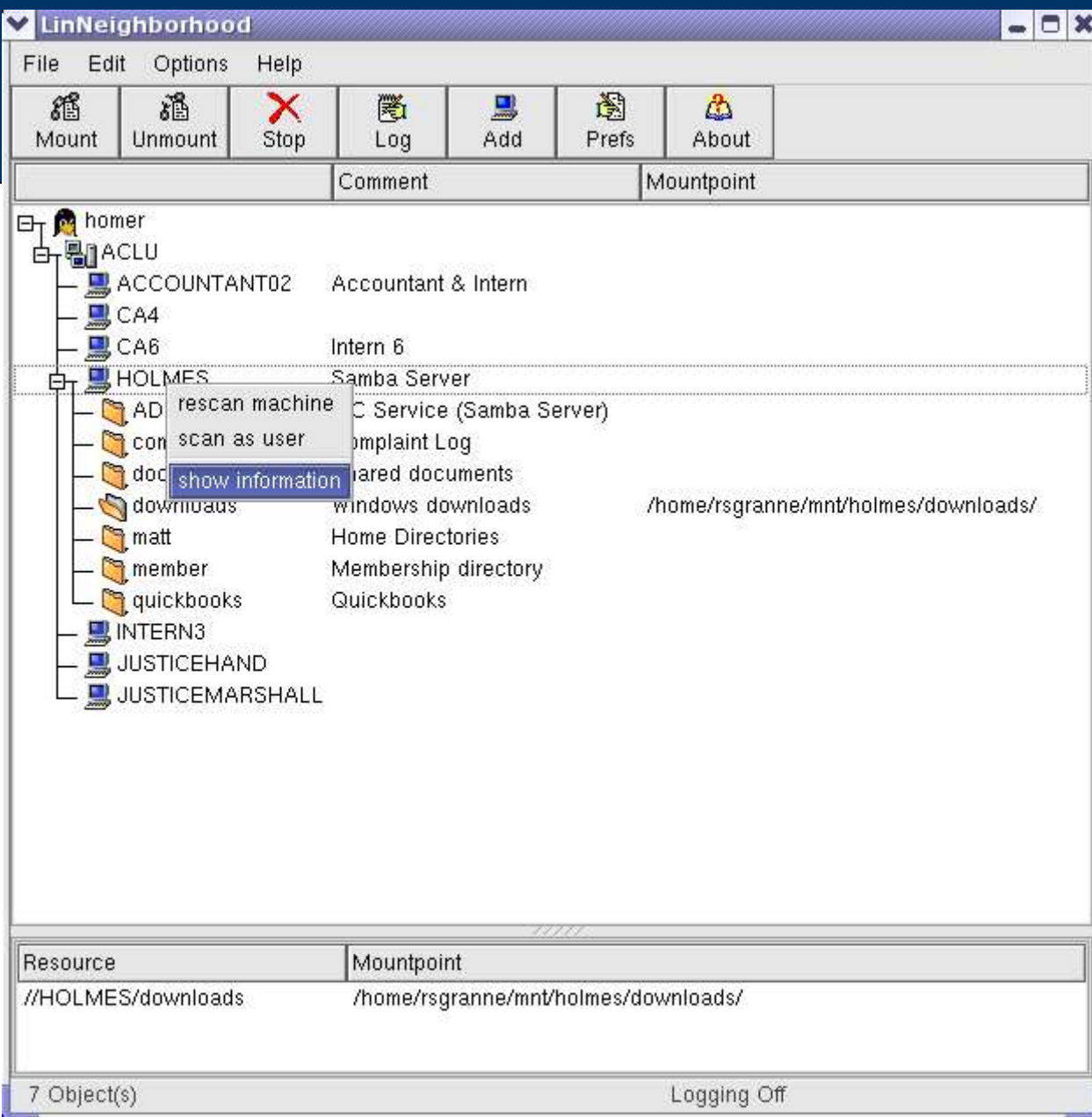
Open your file manager, and you can now access the directories & files as though they were part of your machine.

Life is good.

# Some Cool Additional Features

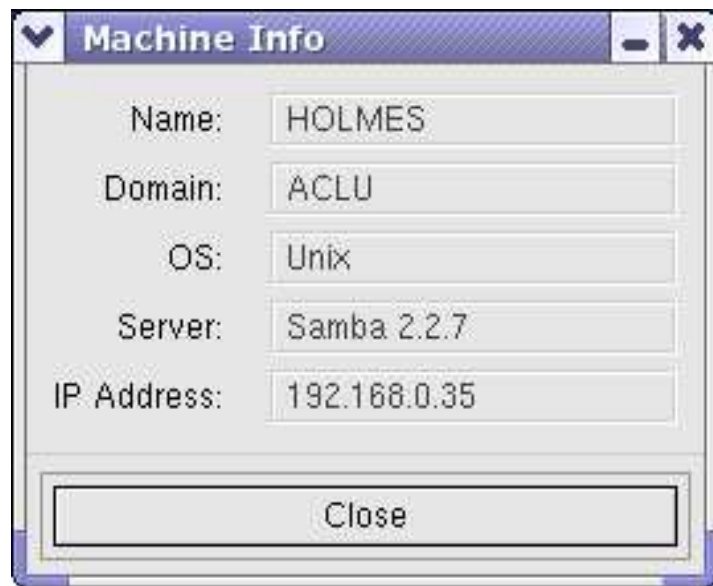
- Get info about machines
- Create automatic mountscripts





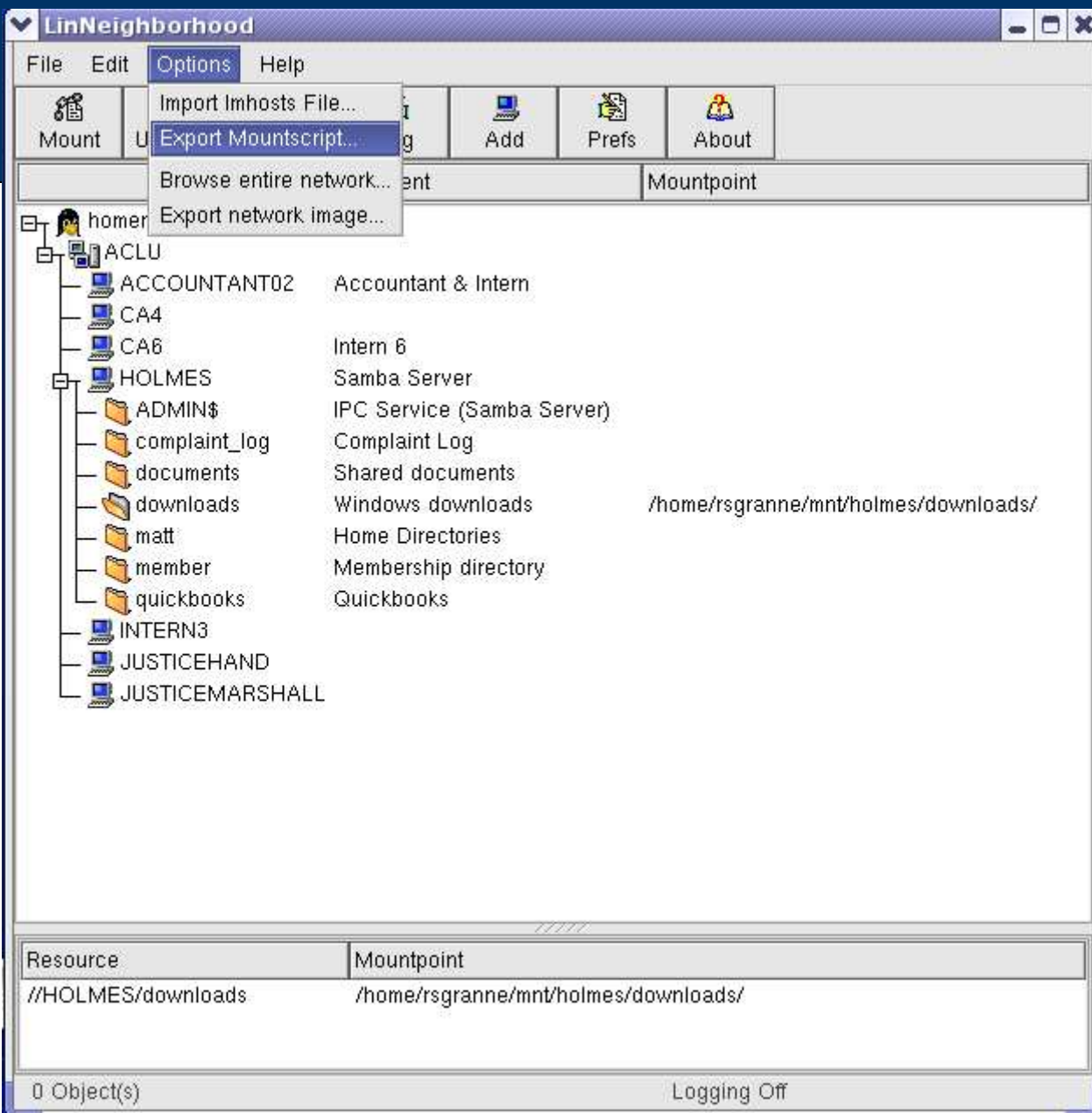
If you right-click on a machine, you get a useful contextual menu.

Choose **show information**.



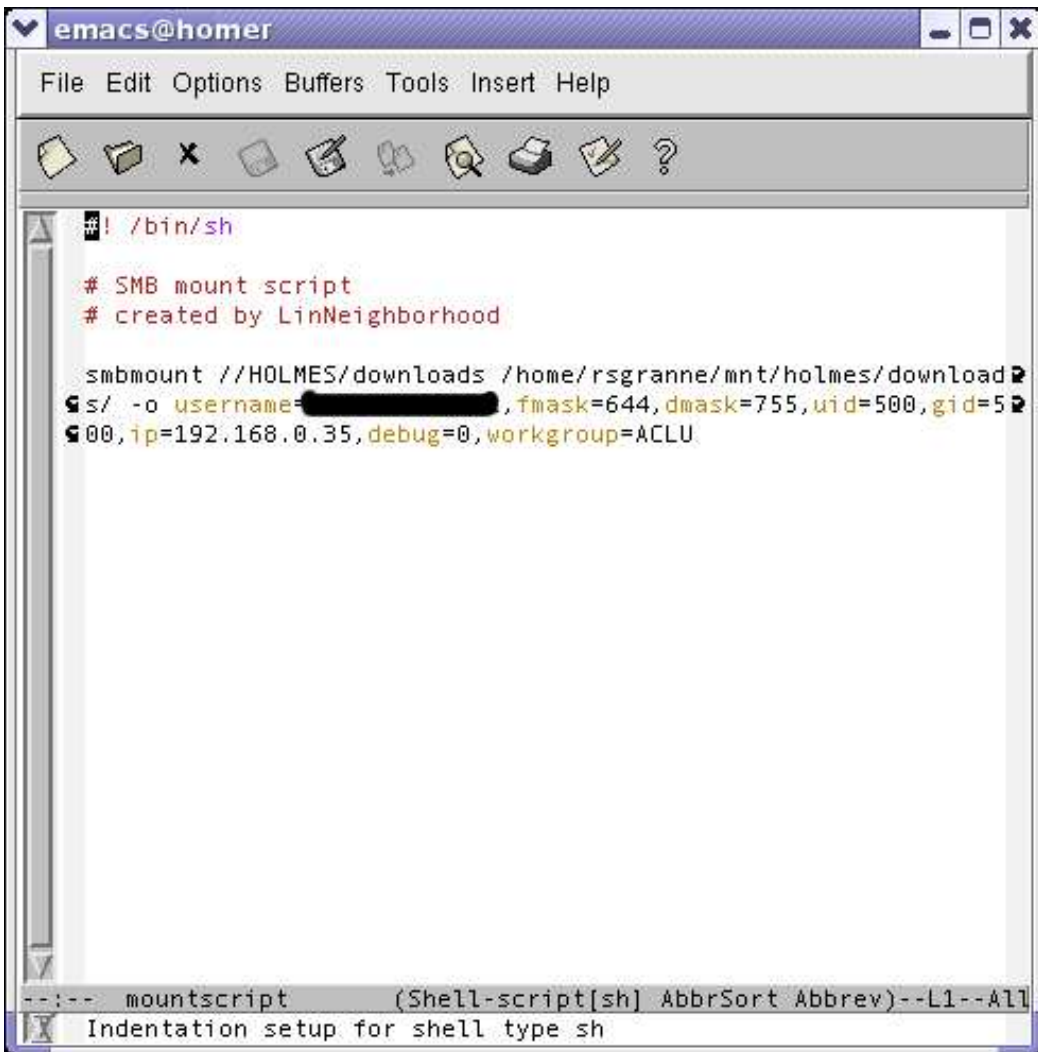
You can get some pretty useful information about the machine.

I use LN to find out the IP address of machines I'm connected to all the time, especially if I want to SSH to them for some reason.



Eventually, you'll get tired of having to manually mount shares you use often.

Select **Options**, then **Export Mountscript ...**

A screenshot of an Emacs editor window titled 'emacs@homer'. The window contains a shell script for mounting an SMB share. The script starts with a comment '# SMB mount script' and '# created by LinNeighborhood'. The main command is 'smbmount //HOLMES/downloads /home/rsgranne/mnt/holmes/download' followed by options: '-o username=[REDACTED],fmask=644,dmask=755,uid=500,gid=500,ip=192.168.0.35,debug=0,workgroup=ACLU'. The status bar at the bottom indicates the file is named 'mountscript' and shows indentation settings for shell type sh.

```
emacs@homer
File Edit Options Buffers Tools Insert Help

# SMB mount script
# created by LinNeighborhood

smbmount //HOLMES/downloads /home/rsgranne/mnt/holmes/download
-o username=[REDACTED],fmask=644,dmask=755,uid=500,gid=500,
ip=192.168.0.35,debug=0,workgroup=ACLU

--:-- mountscript (Shell-script[sh] AbbrSort Abbrev)--L1--All
Indentation setup for shell type sh
```

LN creates a script for you that automates the mounting process. You can have as many mounts as you want in the script.

Save it, and then run it manually when you attach to a network. Or place a link to it in your `.bash_profile` file so that shares are mounted when you login.



# Thank You!

- LinNeighborhood is a shining example of quality open source software. I hope you find it useful.
- Email me: [scott@granneman.com](mailto:scott@granneman.com)
- Visit my Web site: [www.granneman.com](http://www.granneman.com)
- Read my blog: [radio.weblogs.com/0100530](http://radio.weblogs.com/0100530)
- Join GranneNotes, my listserv for people interested in technology & the Internet, by visiting [www.granneman.com](http://www.granneman.com) & signing up

# Licensing of this work

This work is licensed under the Creative Commons Attribution-ShareAlike License. To view a copy of this license, visit <http://creativecommons.org/licenses/by-sa/1.0> or send a letter to Creative Commons, 559 Nathan Abbott Way, Stanford, California 94305, USA.

In addition to the rights and restrictions common to all Creative Commons licenses, the Attribution-ShareAlike License features the following key conditions:

-  **Attribution.** The licensor permits others to copy, distribute, display, and perform the work. In return, licensees must give the original author credit.
-  **Share Alike.** The licensor permits others to distribute derivative works under a license identical to the one that governs the licensor's work.

Questions? Email [scott@granneman.com](mailto:scott@granneman.com)